

# RELIABLE & SUSTAINABLE

The service Basin Electric and our member electric cooperatives provide rural America is essential — reliable, affordable, and responsible electricity delivered to 3 million consumer-owners at homes, schools, businesses, and more across a nine-state region that stretches from the Canadian border to the Mexican border and across the Great Plains. The Basin Electric family of electric cooperatives and our employees work hard every day delivering on our commitment to maintain a safe and reliable flow of electricity to enrich lives.

Especially in the Upper Great Plains, reliable electricity is more than just a convenience — it's a necessity for survival in many instances. Our members endure harsh weather conditions for more than half the year while continuing their routines of commuting to and from work, keeping livestock fed and watered, drying grain, sending children to school, operating machinery, running businesses, and more.

Basin Electric was founded to provide power to rural America, and our culture of stewardship, innovation, and adaptability has proven successful as we have kept the lights (and heat) on. For more than 60 years, our generation and transmission assets have been the engines of commerce for a service territory that feeds and fuels the nation and the world.

We will always honor our commitment of providing our membership with energy that is safely produced, reliable, economic, and environmentally responsible.

## RELIABILITY: NECESSARY FOR RESILIENCY

### WHAT HAPPENS WHEN THE POWER GOES OUT?

- Houses start to cool off immediately.
- On a -20-degree F (Fahrenheit) day (which happens more often than you'd think), a house will be cold in 6 hours and virtually uninhabitable in 12-18 hours.
- Uninsulated pipes can freeze in as little as 4-6 hours.
- Even if a home's heat comes from natural gas or propane, electricity is still typically necessary for it to function.



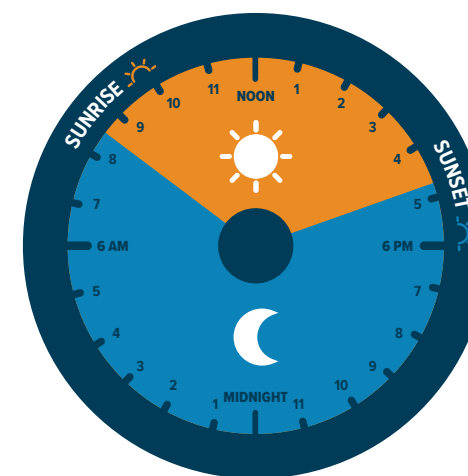
### DAYS BELOW FREEZING

Basin Electric's Headquarters is in Bismarck, North Dakota, where it averages 182 days per year of below-freezing temperatures.

That's approximately half the year.

*Data from National Weather Service*

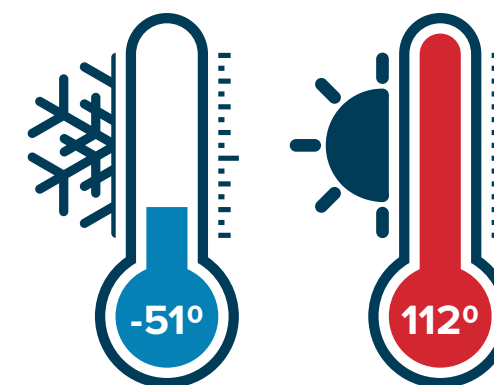
### LIVING IN THE DARK



Sunrise 8:33 a.m., sunset 4:53 p.m.  
8 hours 20 minutes of daylight

*Data from Minot, North Dakota, on Dec. 21, 2022, the shortest day of the year.*

### FROM ONE EXTREME TO THE OTHER

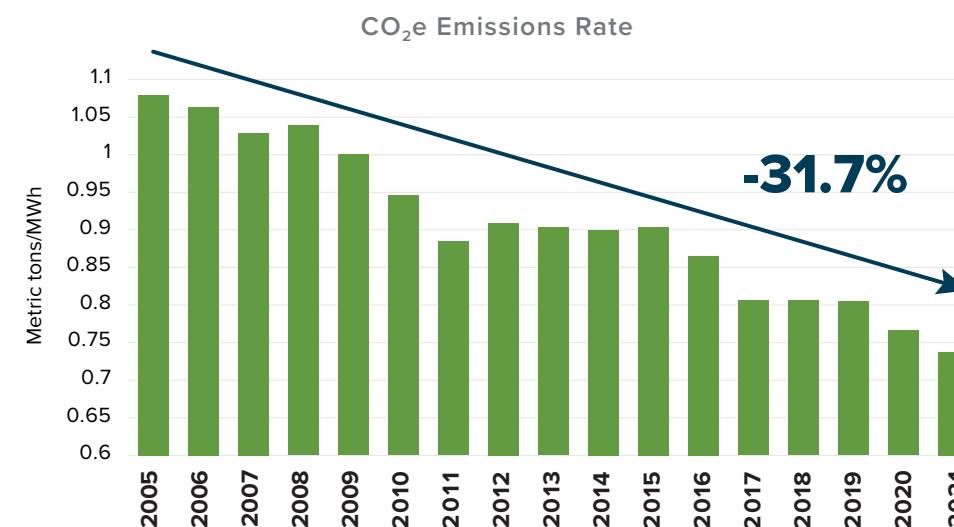


Basin Electric serves areas with extreme temperatures. In the past 20 years across North Dakota, the coldest temperature was -51° F and the highest was 112° F.

*Data from National Weather Service*

### DECLINING CARBON INTENSITY

Today coal represents less than 40% of Basin Electric's energy portfolio. The chart below shows how the cooperative's carbon intensity declines over time as new generation is added.



*Data for 2022 was not available at the time of publication.*