



May 2024

88th Annual Meeting



South Central Electric held its 88th annual meeting at the Windom Community Center on April 2, 2024. Board President Ron Jorgenson lead the meeting. Guest speaker Chris Studer, East River Electric Chief Member and Public Relations Officer, spoke about the cooperative's energy supply and meeting future energy needs.

Director Matt Peters announced this year's scholarship and youth tour winners. The Washington D.C. Youth Tour Essay contest winner is Madelyn Oltmans of Windom. The Basin Electric \$1,000 scholarship winner is Ryan Pierson of Butterfield.

Attorney Mike Edman announced the results of the elections held via mail-in ballot. The cooperative received 753 ballots.

**SCE TO
 DISTRIBUTE
 \$576,375
 IN CAPITAL
 CREDITS TO
 MEMBERS**

South Central Electric will be distributing \$576,375 to members with patronage from 2002 to 2003 along with Great River Energy patronage from 2001 to 2002. Those who earned capital credits and have active accounts will see the capital credits posted on their March electric usage bill. This would be the bill members received with this newsletter at the end of April. Members with capital credits exceeding \$600 or without active accounts will be mailed their capital credits.

ELECTION RESULTS

Approve minutes of 2023 annual meeting	Yes 731 ✓	No 3
Approve 2023 financial report	Yes 728 ✓	No 6
Approve unanimous election of Directors Districts 5 & 6	Yes 726 ✓	No 16



Ryan Pierson of Butterfield was announced as the \$1,000 Basin Scholarship winner at the South Central Electric Annual Meeting. Ryan plans on attending the University of Wisconsin – River Falls in the fall. **Madelyn Oltmans** of Windom was the winner of the Washington D.C. Youth Tour Essay contest. Madelyn will join other students from around Minnesota in Washington D.C. in June.

Operation Round Up® Supports Community Projects



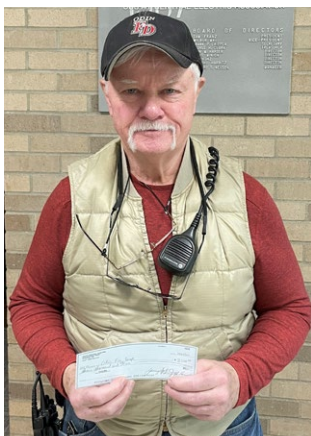
The South Central Electric Association Trust Board met for their Spring meeting and awarded \$7,550 to local organizations and scholarships. The Trust Board received over \$28,000 in requests. It is difficult to turn projects away, unfortunately the requests were much higher than available funding. Funds are received by the South Central Electric Trust through the Operation Round Up® program that rounds up member bills. Funds are used to support local organizations and scholarships. Applications are taken each Fall and Spring.

Organizations receiving funds this Spring

Odin Fire Department	\$3,000
Healing Hearts Recovery.	\$500
Mt. Lake Christian Child Care & Learning Center.	\$1,000
Watowan County Fair Board	\$1,200
St. James Splash Pad	\$1,000
Railroad Days Rail Run Special Needs Run	\$100

Scholarships

Isaac Simonson, Jeffers	\$250
Kelley Bettin, Trimont	\$250
Kody Wassman, Ormsby	\$250



Paul Berg, Odin Fire Department, accepted a check for the purchase of Lucas Cardiac Compression Device.



Curtis Frank received a check for Healing Hearts Recovery in Sherburn. They support women in a sober living home with necessary transportation and other expenses on their road to recovery

2024 Rebate Programs



Recipient must be a South Central Electric member. Any checks or credits will be made in the name or account of the member. The program will end when funds are exhausted; additional rebates may be added at a later date. The completed applications will be processed on a first come first served basis as they are received in our office. Rebate applications can be requested by calling the St. James office or available on line at www.southcentralelectric.com.

REBATES:

Please see rebate applications for details.

- Dehumidifier**\$20
- Air Source Heat Pumps**\$350
- Ductless Heat Pump**\$350
- Ground Source Heat Pump**...\$350/ton
(Limit 10 tons)
- Air Conditioner Tune Up**\$30
- Managed Electric Heat**\$20/kW
Radio controlled, qualifies for discount of \$.031/kWh on system usage. Stored or dual fuel heat. Heat pumps are not eligible for this program.
- LED Yard Light**.....\$25/ea.
(Limit 3)

Credit applied to the energy bill
HSPF rating over 9.5\$600
HSPF rating over 9.5\$600



Must be an Energy Star® appliance to qualify.

COMMERCIAL AND INDUSTRIAL REBATES:

Rebates are available on a custom basis. Rebates will be based on kW reduction on retrofit projects. To be eligible for a rebate the project must have a minimum savings of 1kW. We do not have rebate programs for new construction. Call SCEA for information on these rebates.

Join Us for the 2024 Energy Tour

We are taking reservations for the 2024 Energy Tour to North Dakota. The tour will be June 18-20. We will travel by bus from St. James and Jeffers to Bismarck, North Dakota. The trip will include tours of Antelope Valley Station (coal fired power plant), Great Plains Synfuels (turn coal into natural gas and fertilizers) and Freedom Mine (coal mine). The cost is \$175 per person. The cost per person includes bus, hotel (2 nights), some meals and snacks. We will be sharing this trip with members of Redwood Electric. Call us now to reserve your spot on the tour! We have limited space. Call our office 507-375-3164 to reserve your spot.

NORTH DAKOTA ENERGY TOUR

June 18-20, 2024
\$175/person

SIGN UP TODAY!

call 507-375-3164 or email
jhaler@southcentralelectric.com

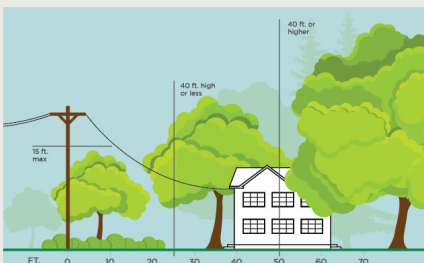


3 Ways to Help Limit Tree Trimming

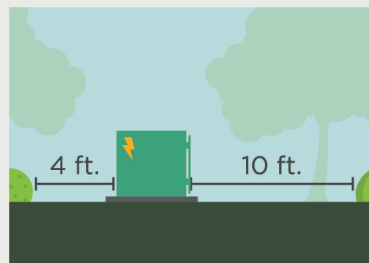
Did you know electric utilities are required to trim trees and other types of vegetation that grow too close to overhead power lines? We know you love your trees, and we will do everything we can to avoid trimming them.

Here's how you can help:

1. Plant trees in the right place. Trees that will be <40 ft. should be planted at least 25 ft. away from power lines (>40ft. should be at least 50 ft. away).



2. Don't block pad-mounted transformers. Plant shrubs at least 10 ft. away from transformer doors and 4 ft. from transformer sides.



3. Report dangerous branches. If you spot a tree or branch that is dangerously close to power lines, please let us know.



Trimming improves safety for all.

Let's work together to enjoy the beauty of trees and reliable electricity.

ELECTRIC MOTOR REQUIREMENTS

South Central Electric has requirements in place for electric motors connected to our system. These requirements are in place to eliminate flicker and voltage sag problems caused by member's equipment on our lines. Members need to take these requirements into account when purchasing new motors, grain drying systems or upsizing motors. The requirements are not restricted to new motors. There may be issues with currently installed equipment that exceed these limits.



MOTOR STARTING CURRENT LIMITS

1. The Cooperatives' limits allow single-phase motors up to 10HP and three-phase motors up to 30HP to be started without reducing the starting current (soft start), provided the motor design is NEMA "G" or better. Assuming NEMA Code "G" of 5.29 amps/HP and a power factor of 90% or greater.
2. Maximum Starting Current Limits
 - Single-phase 240 volt: 260 amps
 - Three-phase 208 volt: 520 amps
 - Three-phase 480 volt: 225 amps

The starting current limitations are applied to the sum of motor starting currents if multiple motors are started simultaneously.

It is the member's responsibility to know whether a "soft start" motor may be required. Motor installations outside the parameters which cause unacceptable voltage flicker or sag problems must be remedied at the expense of the member.

Harmonic Distortion from Variable Frequency Drives (VFD's)

Variable frequency drives (VFD) may cause harmonic distortion. It is the responsibility of the member to correct harmonic distortion created by on site equipment. Harmonic distortion may also occur with member owned renewable energy systems.

These requirements are in place to assure reliable and safe delivery of electricity to all our members. If you have questions please contact our office.

COGENERATION NOTICE

In compliance with South Central Electric Association's adopted rules relating to cogeneration and small power production, South Central Electric Association is obligated to interconnect with and purchase electricity from cogenerators and small power producers, whom satisfy the conditions as a qualifying facility.

South Central Electric is obligated to provide information free of charge to all interested members upon request regarding rates and interconnection requirements. All interconnections require an application and approval to become a qualifying facility.

Any dispute over interconnections, sales, and purchases are subject to resolution by the South Central Electric Board. Interested members should contact South Central Electric Association, P.O. Box 150, 71176 Tiell Dr., St. James, MN 56081 or call (507) 375-3164.



Official monthly newsletter

South Central Electric

71176 Tiell Dr., PO Box 150
St. James, MN 56081-0150
(507) 375-3164

Outages: (888) 805-7232

E-mail address:

sce@southcentralelectric.com

Web:

www.southcentralelectric.com

Office hours:

7 a.m. to 3:30 p.m.

Ron Horman, General Manager

Board of Directors

President, Ron Jorgenson

Vice President, Michael Miest

Secretary, Brad Asendorf

Treasurer, Matt Peters

Brent Imker, Director

Mark Sandberg, Director

Bill Kunz, Director

The Board meets the fourth Tuesday of the month at South Central Electric's building at 71176 Tiell Dr., St. James, MN.

Please see our website for a summary of the board meetings.

This institution is an equal opportunity provider and employer.

If you wish to file a Civil Rights program complaint of discrimination, complete the USDA Program Discrimination Complaint Form, found online at http://www.ascr.usda.gov/complaint_filing_cust.html, or at any USDA office, or call (866) 632-9992 to request the form. You may also write a letter containing all of the information requested in the form. Send your completed complaint form or letter to us by mail at U.S. Department of Agriculture, Director, Office of Adjudication, 1400 Independence Avenue, S.W., Washington, D.C. 20250-9410, by fax (202) 690-7442 or email at program.intake@usda.gov.

VISIT
OUR WEBSITE!

www.southcentralelectric.com

FOLLOW US
on Facebook!

