



June 2024

Local 4-H Chapters Receive \$9,000 in Donations



The Watonwan, Martin and Cottonwood County 4-H organizations each received \$3,000 in donations from South Central Electric Association, Basin Electric Power Cooperative and CoBank. It started as a \$1,000 donation from South Central Electric to each of the county 4-H chapters. South Central Electric applied for and received matching funds from Basin Electric, a South Central Electric power supplier and CoBank, a cooperative bank serving vital industries throughout rural America.

South Central Electric's donation was matched by CoBank through its Sharing Success program. Sharing Success was established in 2012 to celebrate the International Year of the Cooperative. The response from the bank's customers was overwhelmingly positive and the bank has renewed the program each year since. Since the program's inception, CoBank and its customers have together provided over \$86 million in support to charitable organizations across the nation.

Basin Electric Power Cooperative is based in Bismarck, ND. Basin provides electric generation and transmission to electric cooperatives in 9 states. Its Charitable Giving Program offers matching funds for donations member systems give to local organizations.

Supporting the communities they serve is an important part of the cooperative culture. The three cooperatives believe strongly in improving the quality of life in their rural communities.



Morgan Ignaszewski received \$3,000 in donations for the Martin County 4-H.



Mikaela Ahrens was given \$3,000 in donations for the Watonwan County 4-H by Jim Haler, SCE Member Services Manager.



Jim Haler, SCE Member Services Manager, presented Crystal Reith with \$3,000 in donations for the Cottonwood County 4-H.

Don't Let Your Generator Generate Trouble

Having a generator on hand, whether portable or permanent, may sound like a great idea for times when the power goes out, but misusing one is dangerous. Although they can help light your home or cool your perishable food when the neighborhood is dark, if used incorrectly you could have a much bigger problem on your hands.

When using a portable version, there are two ways to connect it to a home. The first way is with a powered circuit panel that has a power transfer switch, which monitors incoming voltage from the utility line. The circuit panel and transfer switch should always be installed by a qualified electrician. The second option is to plug in a limited number of home appliances directly into a fuel-powered portable generator with heavy-duty extension cords.

Never try to power your home by plugging a generator into a wall outlet. This is known as back feeding, and it could electrocute a neighbor or an electric lineman working to restore power. A permanent generator must also have a transfer switch installed by a qualified electrician to avoid back feeding. Because of the harm an incorrectly powered generator can cause, the transfer switch is required by the National Electrical Code.

The primary hazards of using a portable generator are not pretty. They include carbon monoxide (CO) poisoning from the toxic engine exhaust, electric shock or electrocution, and fire, according to the Federal Emergency Management

Agency (FEMA). According to the agency, most of the deaths and injuries associated with portable generators are from CO poisoning when generators are used indoors or in partially enclosed spaces. A permanent or standby generator also has significant risks if not installed by a qualified electrician. Installing one is extremely dangerous and definitely not a DIY project.

Portable versions are less expensive than permanent or standby models and power only select appliances. The most expensive permanent generators—standby versions that are permanently installed and power most of the appliances in your home—are convenient but pricey. The average permanent system costs around \$10,000.

Safe Electricity points to other important safeguards to take when using a generator:

- Operate a portable generator in well ventilated locations outdoors away from all doors, windows and vent openings to avoid carbon monoxide poisoning. The instructions that come with it are not meant for the recycle bin. Read and follow them; they are important.
- Turn the generator on before using it. Once it's running, turn your appliances and lights on one at a time to avoid overloading the unit. Generators are for temporary use and limited load; prioritize your needs.
- Never use a generator in a puddle or standing water and never touch with wet hands.
- To protect a portable generator from moisture, operate it on a dry surface under an open, canopy-like structure.
- Never use or install a generator in an attached garage, even with the door open.
- Turn off portable generators and let them cool down before refueling. Never refuel a generator while it is running.
- Store fuel for your portable generator in a container that is intended for the purpose and is correctly labeled as such. Store the containers outside of living areas.
- Keep children and pets away from all generators, especially portable ones. Many generator components are hot enough to burn you during operation.

GENERATOR Safety

Avoid hurting yourself and others – including lineman working to restore power. Understand how to use your generator safely!

Learn about preventing “backfeed” and more at:

 Safe Electricity.org



Using a generator is serious business and shouldn't be done in haste. Learn more about using electricity safely and efficiently at [SafeElectricity.org](https://www.SafeElectricity.org).

2024

REBATE

PROGRAMS



Recipient must be a South Central Electric member. Any checks or credits will be made in the name or account of the member. The program will end when funds are exhausted; additional rebates may be added at a later date. The completed applications will be processed on a first come first served basis as they are received in our office. Rebate applications can be requested by calling the St. James office or available on line at www.southcentralelectric.com.

REBATES:

Please see rebate applications for details.



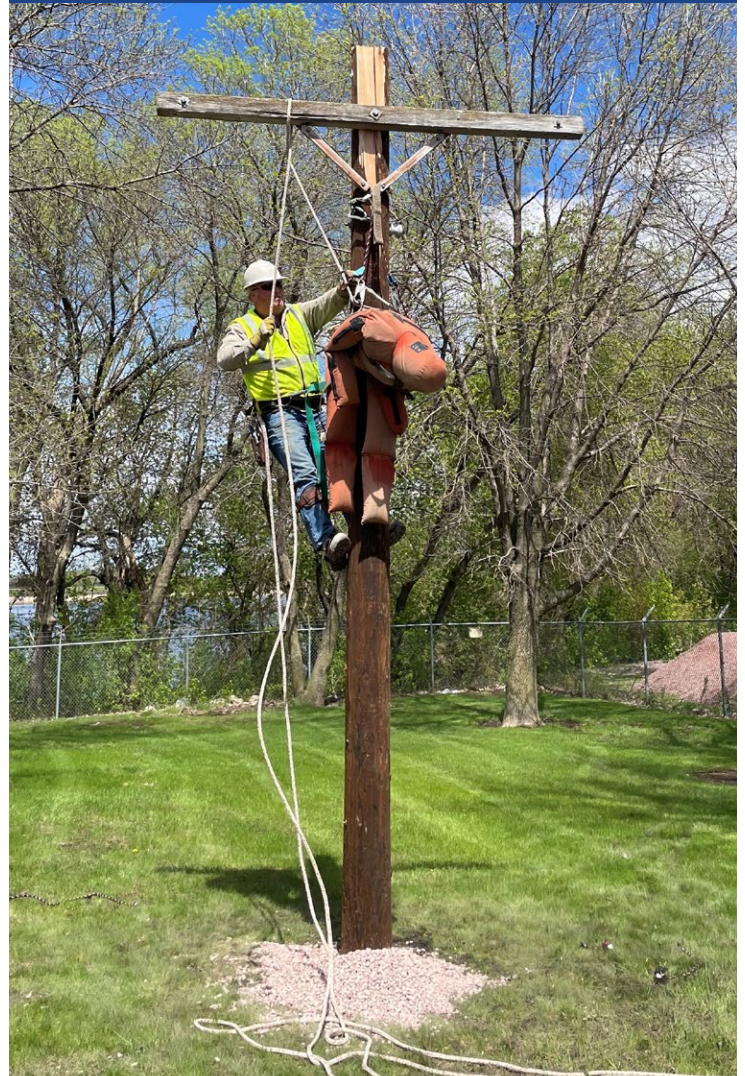
Must be an Energy Star® appliance to qualify.

- Dehumidifier** \$20 Credit applied to energy bill
- Air Source Heat Pumps** \$350 HSPF rating over 9.5.... \$600
- Ductless Heat Pump** \$350 HSPF rating over 9.5.... \$600
- Ground Source Heat Pump** .. \$350/ton (Limit 10 tons)
- Air Conditioner Tune Up** ... \$30
- Managed Electric Heat** \$20/kW
Radio controlled, qualifies for discount of \$.031/kWh on system usage.
Stored or dual fuel heat. Heat pumps are not eligible for this program.
- LED Yard Light**..... \$25/ea. limit 3

COMMERCIAL AND INDUSTRIAL REBATES:

Rebates are available on a custom basis. Rebates will be based on kW reduction on retrofit projects. To be eligible for a rebate the project must have a minimum savings of 1kW. We do not have rebate programs for new construction. Call SCEA for information on these rebates.

Pole Top Rescue Safety Training

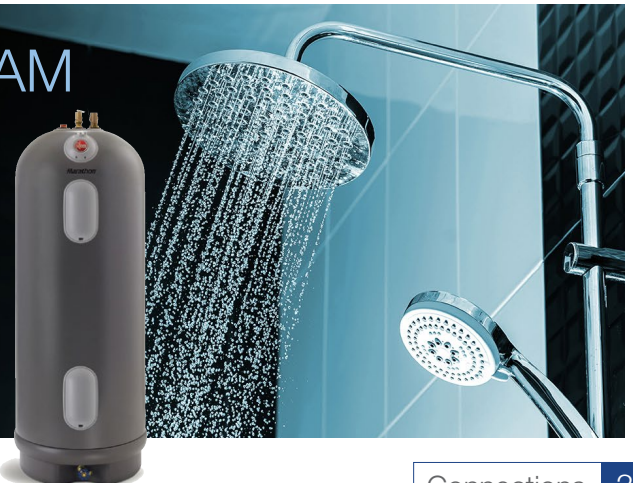


South Central Electric linemen had their annual pole top rescue safety training on May 7. That same day all employees went through emergency response and mayday training.

SCEA WATER HEATER PROGRAM

SCEA's peak shave water heater program provides members with a Marathon water heater at a discounted price for participating in the load management program.

The cost for water heaters is \$750. This is a great value for members. SCEA pays the cost of the electrician to wire the water heater and radio control. The member would pay any costs incurred by a plumber.



Operations Report

Jeff Benson, Operations Manager

South Central Electric has started work on this year's work plan. This will include projects throughout the service territory. Please be extra careful farming near SCEA equipment in the ditches. We've had a few close calls already this spring. When maneuvering and unfolding sprayers be aware of any overhead power lines. If you have concerns about the height of the wires over the field driveways and your machinery going under them let us know. We can get a measurement and install taller poles to get more clearance if needed. We are still experiencing lead times of up to a year on our wire and other materials. If you are planning upgrades to your service, you need to talk to your electrician and us to plan for ordering material in a timely manner.

This pole was hit along a roadside ditch knocking out power to area members. Please be aware of your surroundings and use caution around our equipment.



Official monthly newsletter

South Central Electric

71176 Tiell Dr., PO Box 150
St. James, MN 56081-0150
(507) 375-3164

Outages: (888) 805-7232

E-mail address:

sce@southcentralelectric.com

Web:

www.southcentralelectric.com

Office hours:

7 a.m. to 3:30 p.m.

Ron Horman, General Manager

Board of Directors

President, Ron Jorgenson
Vice President, Michael Miest
Secretary, Brad Asendorf
Treasurer, Matt Peters
Brent Imker, Director
Mark Sandberg, Director
Bill Kunz, Director

The Board meets the fourth Tuesday of the month at South Central Electric's building at 71176 Tiell Dr., St. James, MN.

Please see our website for a summary of the board meetings.

Protect your home and family with a Briggs & Stratton home standby generator

You can be confident that South Central Electric works hard every day to keep your lights on. For those times when mother nature strikes, we still have you covered with our generator program. You can purchase a whole home Briggs & Stratton Power Protect generator from South Central Electric. If you lose power, the generator automatically takes over. When power is restored, it automatically shuts down. Power when you need it without the hassles of portable or PTO generators.

Estimated Cost of \$8,500 to \$12,000 includes the following:

- Briggs & Stratton® Power Protect DX with industry leading 10-year warranty.
- Minnesota winter ready with battery warmer, oil heater & battery charger.
- Automatic transfer switch.
- **Electrician installation.**



Generators run on LP or Natural Gas. Estimate does not include costs of gas installation from your gas provider.

**Call our office to learn more at
(507) 375-3164**

This institution is an equal opportunity provider and employer.

If you wish to file a Civil Rights program complaint of discrimination, complete the USDA Program Discrimination Complaint Form, found online at http://www.ascr.usda.gov/complaint_filing_cust.html, or at any USDA office, or call (866) 632-9992 to request the form. You may also write a letter containing all of the information requested in the form. Send your completed complaint form or letter to us by mail at U.S. Department of Agriculture, Director, Office of Adjudication, 1400 Independence Avenue, S.W., Washington, D.C. 20250-9410, by fax (202) 690-7442 or email at program.intake@usda.gov.

**VISIT
OUR WEBSITE!**

www.southcentralelectric.com

**FOLLOW US
on Facebook!**

